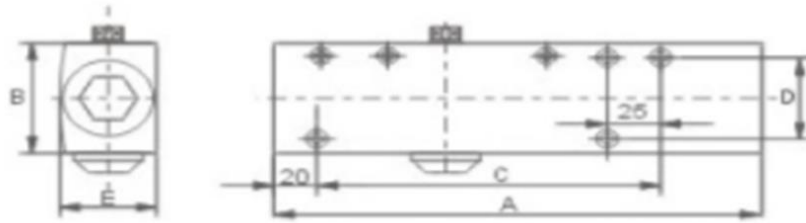


# LK94-2

## Door Closer Data Sheet



Overall Dimension			Mount hole Dimension		Applicable Door Weight
A	B	E	C	D	(KG)
227	60	43.5	160	46	40-65

**Finishes**

Silver

**Highlight features**

- Aluminium alloy body
- Standard arm
- Closing speed and latching speed adjustable with two valves
- Box package
- Fixed power size 2

**Product Description**

Model No.		LK94-2
Fixed power size		2
Adjustable Spring power		-
Door weight(kg)		40-65
	Standard	Yes
Installation	Top Jamb	Yes
	Parallel Arm	Optional
	Length	227
	Width	60
Dimension of closer body(mm)	Height	43.5
	Horizontal mounting holes	160
	Vertical mounting holes	46
Closing speed adjustment		Yes
Latching speed adjustment		Yes
*Max opening angle		180°
Adjustable back check (BC)		-
Fixed back check (BC)		-
*Built in Hold Open		-
Delay action		-
Fire rated		Yes